

# **TECHNICAL RIDER FOR – ACIS A GALTEA**

## **BUCHTY A LOUTKY + COLLEGIUM MARIANUM**

### **Stage**

Minimum stage dimensions for puppeteers: 8m x 8m – if there is no orchestra pit, the height of the stage must be 80cm high of orchestra

Minimum height: 4,5m.

Minimum space dimension for orchestra: 2,5m x 8m

Black curtains or panels

1x big table for props (red in plan)

1x table for props for soloists, behind the puppet theatre on the side

9x stable music stands with warmwhite dimmable lamps!!

1 x lamp for harpsichord

9 x chairs without arms

1 x stool for double bassist

Italian harpsichord – tuning:

values of Werckmeister - Continuo

deviations in cents from the uniform temperature

c	cis	d	dis	e	f	fis	g	gis	a	b	h
+7,3	-5,5	+2,7	-1,0	-1,0	+9,1	-3,8	+4,2	-4,1	0	+7,2	-3,1

### **Lighting**

Control board in FOH (provided by the company - DMX, ArtNet, sACN familiar). - table min. 100cm x 60cm/70cm high

1x DMX line from FOH to stage for our LED light system

4x PC 500W + 4x stand minimum height 2,5m - or we can approve any substitutions, please ask us

4x RGB LED PAR - beam angle 40°- or we can approve any substitutions, please ask us

2x stand minimum height 4m with Tbar - or we can approve any substitutions, please ask us

4x asy flood 500W with barndoors on floor stand or „footramp“ - or we can approve any substitutions, please ask us

4 x Profile spot cca 15°-30° (ETC, RJ) - or we can approve any substitutions, please ask us

2x RGB LED PAR - beam angle 20°- 40°- or we can approve any substitutions, please ask us

1x direct socket 230V/16A (schuko/french) on stage

possibility to control house lights from live post

sufficient number of extension leads

### **Setting and striking the show**

We need two persons to help us with **unloading and loading the van.**

5 hours set up time

2 hous break down time

Duration of the show: cca 2 hrs with interval (15 – 20 min).

### **Parking**

Secure parking for one 3,5t van and car for the whole period of production as close to the venue load in as possible

### **Dressing room**

1x dressing room for puppeteers (5 persons) + chairs

1x dressing room for soloists (5 persons) – IRON + IRONING BOARD + CHAIRS, 2 x COSTUME HANGERS (1x in the dressing room ,1 x behind the stage for a quick costume change), TABLE WITH THE MIRROR FOR MAKE UP in the dressing room

1x dressing room for musicians (10 persons) + chairs

**Refreshment in the dressing rooms – coffee, water, fruit, biscuits etc.**

## HOUSE / VENUE CREW

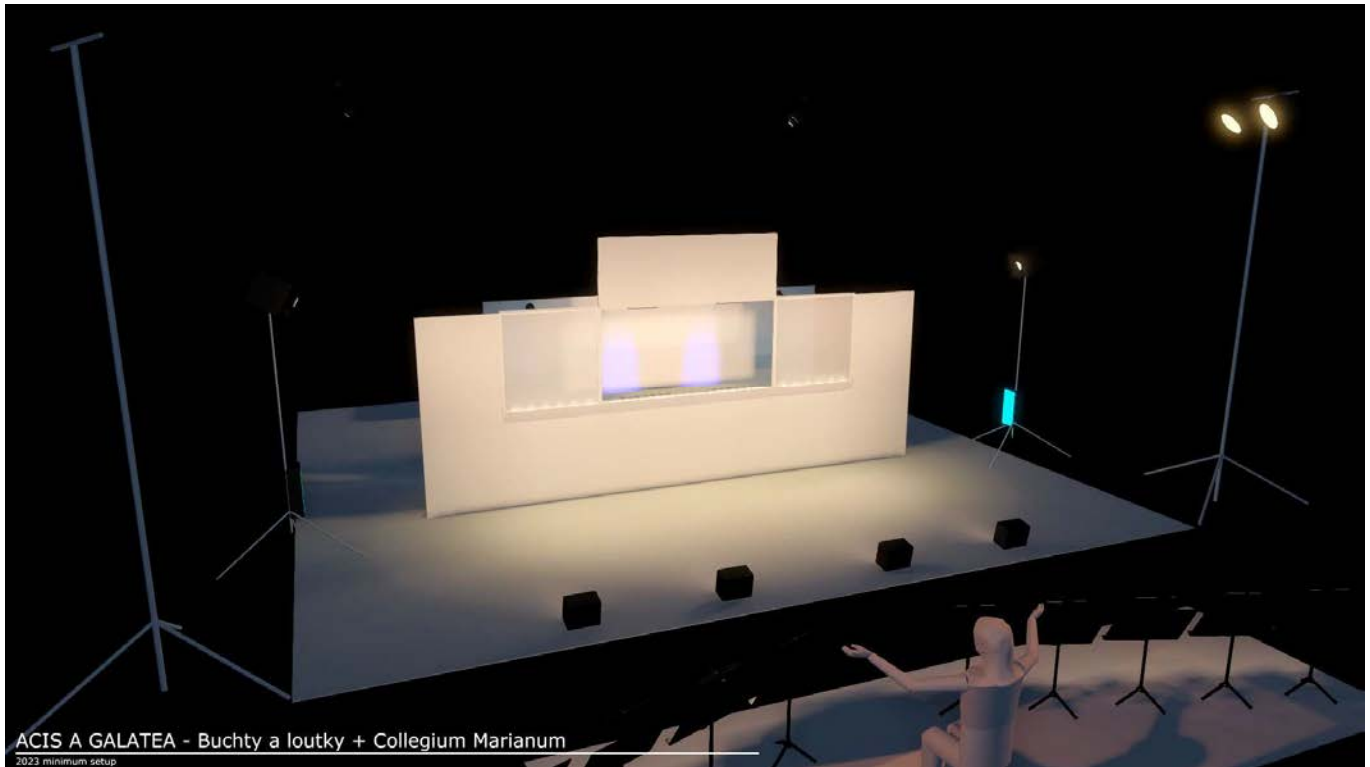
It is required to have local/house lighting technician present, who are familiar with the venue and house lighting systems being used.

## Contact

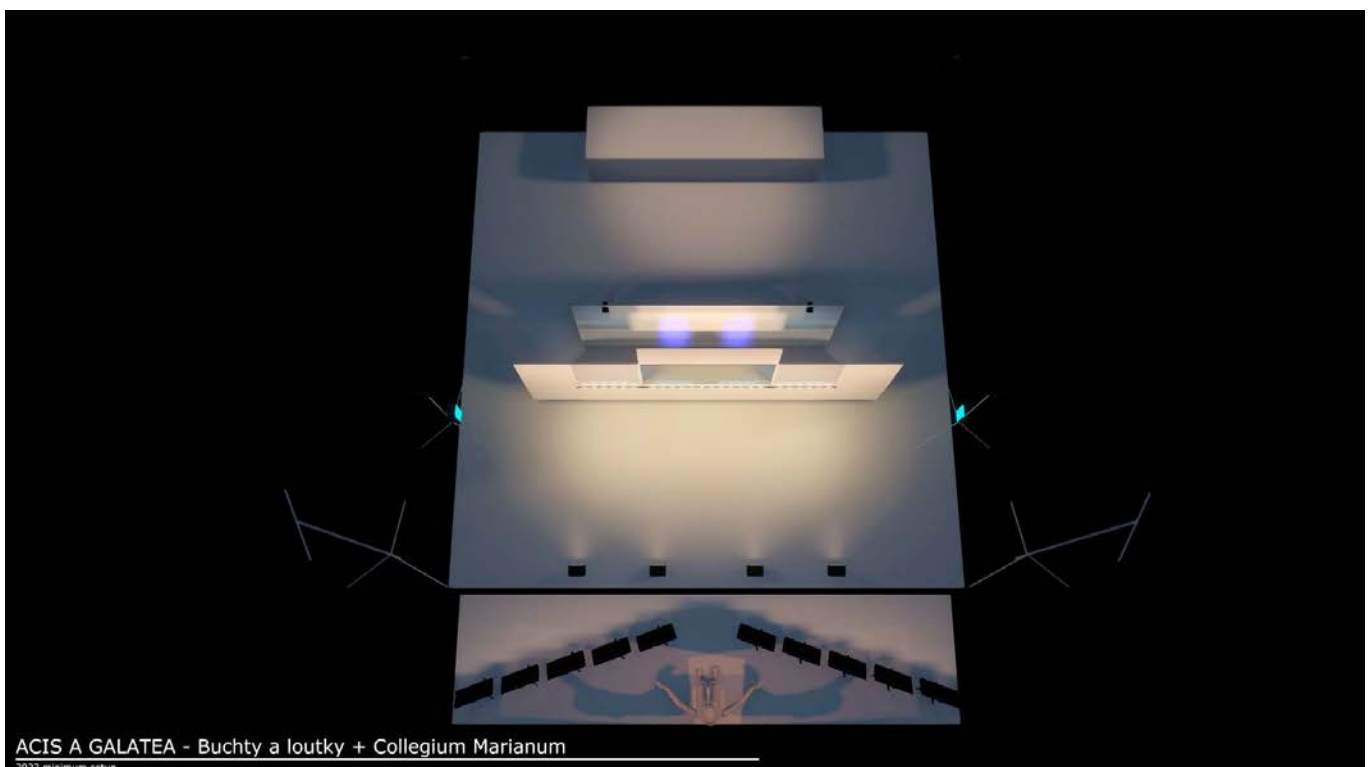
Puppet theater - Daniel Schenk - GSM: +420 776 572 685 / e-mail: info@mittelpunkt.cz

Orchestra, soloists – Tereza Skřivanová – GSM: +420 774 448 340 / e-mail: production@collegiummarianum.cz

Technician, lights - Lukáš Valiska - GSM: +420 602 829 671 / e-mail: waleek.cz@gmail.com



3D visualisation - Front view



*3D visualisation - Top view*



*3D visualisation - Backstage side view*



*Front view*





*Backstage side view*

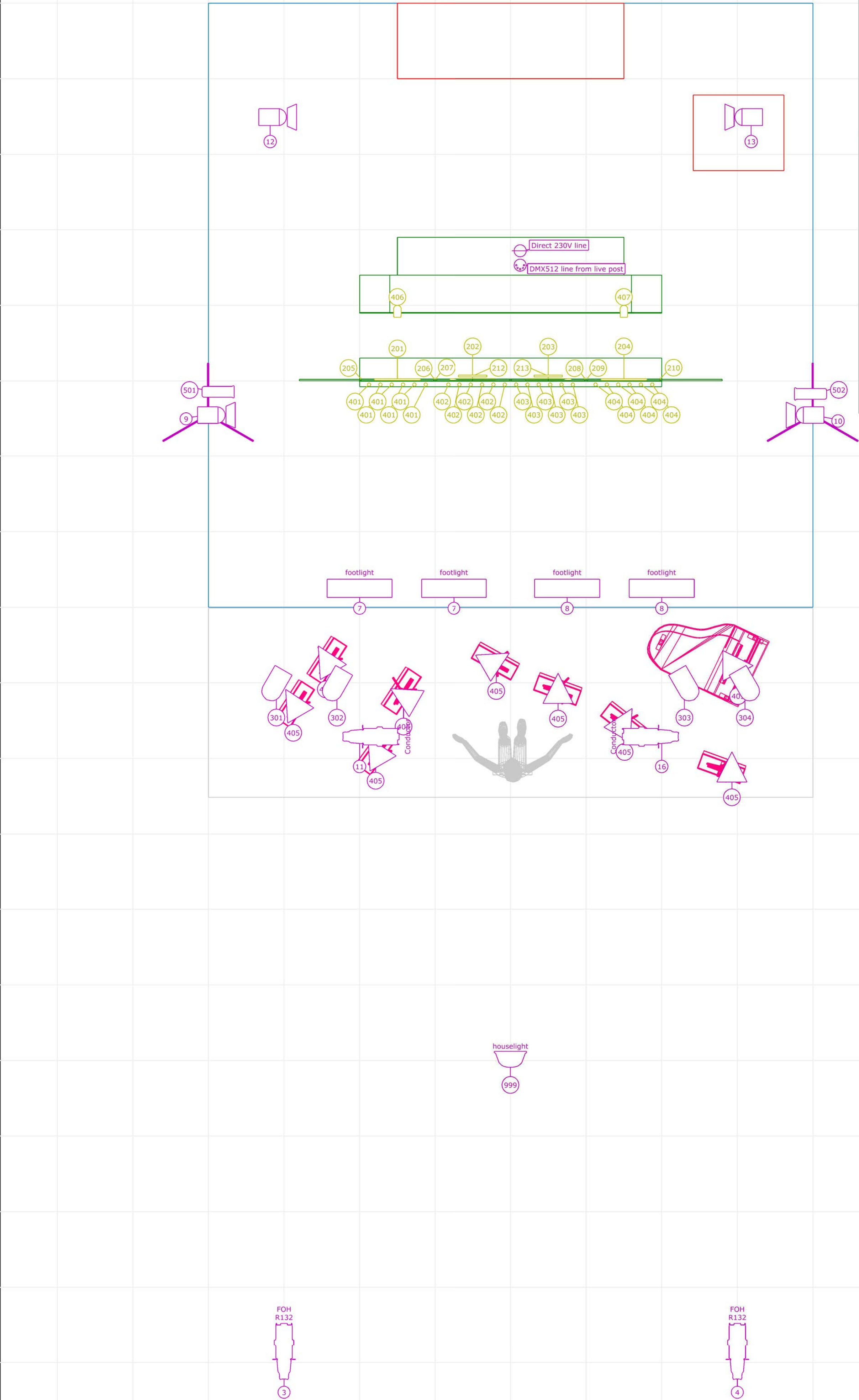


*Backstage*

Photos from show:







Symbol key

Omnidirectional 12V/3W LED Bulb (24)

Dimmable Music Stand Light (10)

24V RGB-WW LED Tape (10)

PC 500W - 1000W (4)

Wash RGB LED silent fixture - minimum beam angle 40° (4)

Profile spot 15°-30° (4)

halogen or LED warmwhite "Footlight" - minimal beam angle 60° (min 5000lm)

LED Par 16 12V/12W/120° (2)

Wash RGB LED silent fixture - beam angle in between 20° - 40° (2)

24V UV LED Tape (2)

whatever houselights :) (1)

Color key

1. PROVIDED BY PROMOTER - LIGHTING FIXTURES

1. PROVIDED BY PROMOTER - MUSIC STANDS

1. PROVIDED BY PROMOTER - TABLES

2. MINIMUM DIMIMENSION OF THE STAGE 8m x 8m

2. MINIMUM ORCHESTRA SPACE 8m x 2m

3. OWN FIXTURES

3. SCENE SET

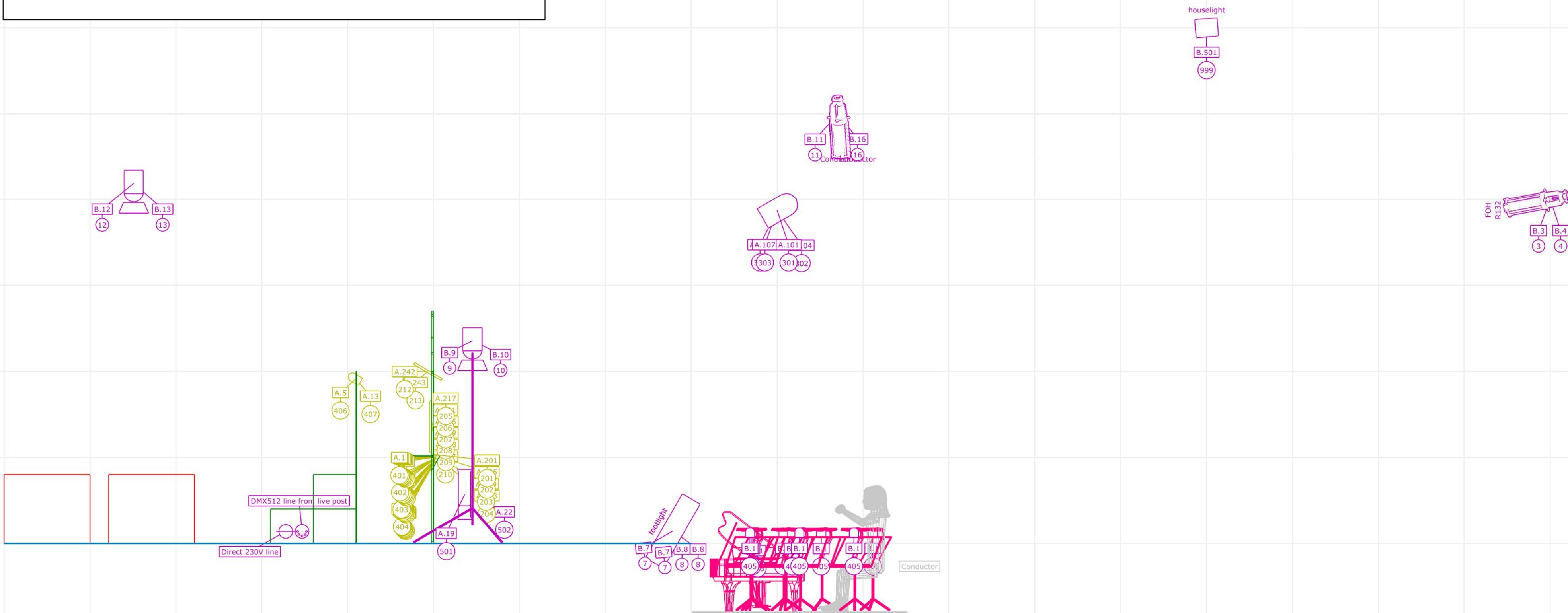
## SECTION

Symbol key

- |   |  |
|---|--|
|    | Omnidirectional 12V/3W LED Bulb (24)   |
|  | 24V RGB-WW LED Tape (10)   |
|  | Dimmable Music Stand Light (9)   |
|  | PC 500W - 1000W (4)  |
|  | halogen or LED warmwhite "Footlight" - minimal beam angle 60° (min 5000lm) (4) |
|  | Profile spot 15°-30° (4)   |
|  | Wash RGB LED silent fixture - minimum beam angle 40° (4)                       |
|  | 24V UV LED Tape (2)  |
|  | Wash RGB LED silent fixture - beam angle in between 20° - 40° (2)              |
|  | LED Par 16 12V/12W/120° (2)  |
|  | whatever houselights :) (1)  |

Color key

1. PROVIDED BY PROMOTER - LIGHTING FIXTURES
1. PROVIDED BY PROMOTER - MUSIC STANDS
1. PROVIDED BY PROMOTER - TABLES
2. MINIMUM DIMENSION OF THE STAGE 8m x 8m
2. MINIMUM ORCHESTRA SPACE 8m x 2m
3. OWN FIXTURES
3. SCENE SET



ACIS A GALATEA - Buchty a loutky + Collegium Marianum

Grid spacing 1m x 1m

## Project location

### minimum setup

Project date  
2023

Accounting author  
Lukas Valiska - waleek.cz@gmail.com, +420602829671

Drawing version  
**final**

ACIS\_a\_Galatea\_2023\_FINAL.c2p



Color key

1. PROVIDED BY PROMOTER - LIGHTING FIXTURES

1. PROVIDED BY PROMOTER - MUSIC STANDS

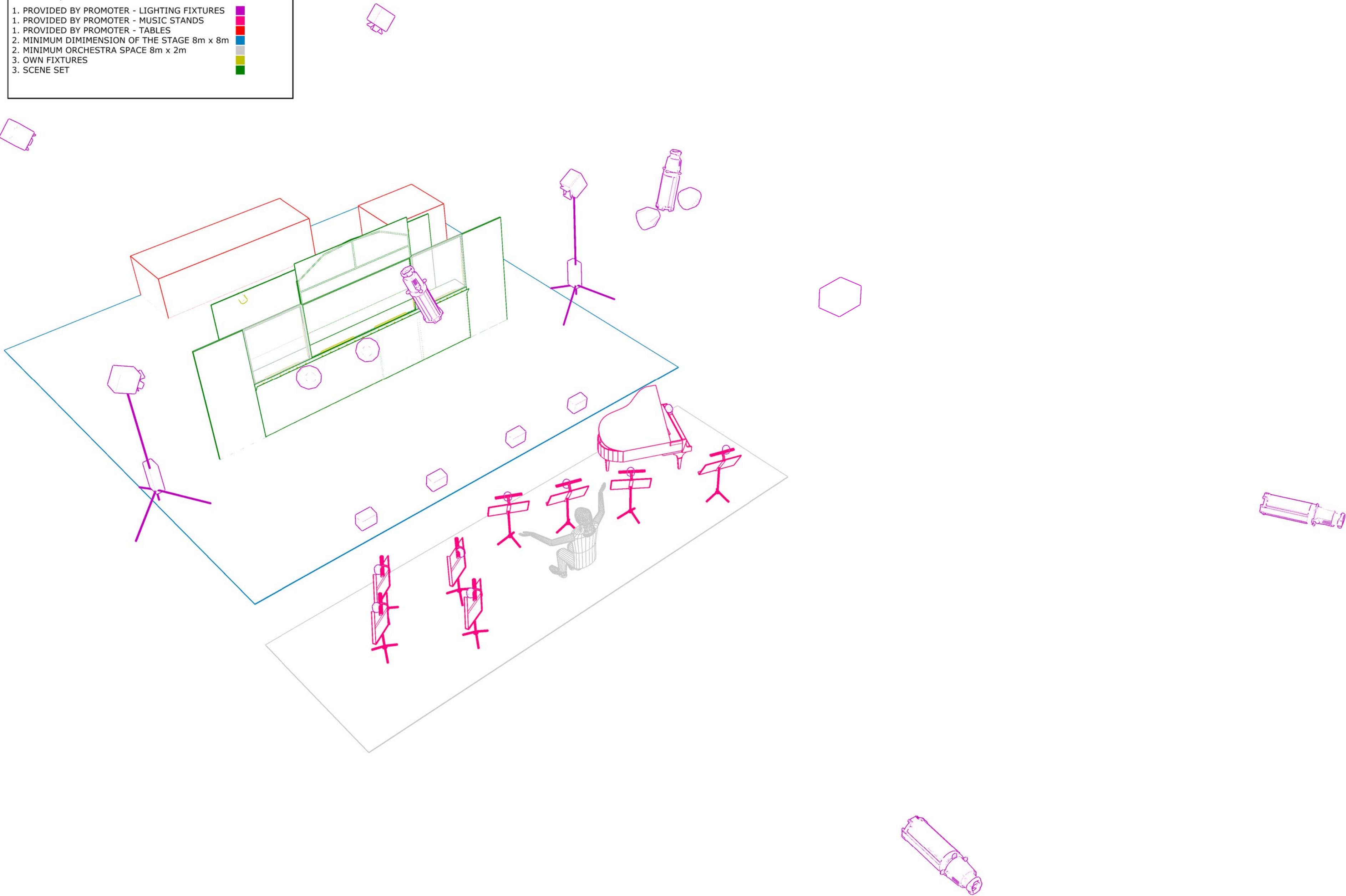
1. PROVIDED BY PROMOTER - TABLES

2. MINIMUM DIMIMENSION OF THE STAGE 8m x 8m

2. MINIMUM ORCHESTRA SPACE 8m x 2m

3. OWN FIXTURES

3. SCENE SET



ACIS A GALATEA - Buchty a loutky + Collegium Marianum			
Project location minimum setup	Project year 2023		
Client			
Working author Lukas Valiska - waleek.cz@gmail.com, +420602829671	Working version final	File name ACIS_a_Galatea_2023_FINAL.c2p	Document name